



2025 BUYER'S GUIDE





NO LIMIT

Hollis engineers superior technical diving equipment. We are intensely focused on providing diving solutions to fulfill our customer's needs: owning the best technical diving products for their complex diving experiences. This philosophy comes from our founder and industry pioneer Bob Hollis—a man with no limits when it comes to technical diving. In the 1950s with diving still in its infancy, twenty-something-year-old Hollis pushed boundaries by building his own equipment to fuel his passion for the underwater. The ensuing decades saw Hollis innovate and disrupt—pioneering dives to the Andrea Doria—and develop reliable and dependable products that not only launched the technical diving industry but pushed the limits of tech diving into the adventure-seeking, curiosity-driven passion it's revered as today.

Our best-in-class authority and experience leads every stage of product development, serving both the tech diver and educating the rec diver towards a brand-new category of diving. From backplates, wings, harnesses and lighting systems, to sidemount and rebreathers, we concept, engineer, test and test again to ensure we remain the leading global provider of all technical diving equipment.

Divers around the world proudly bear the Hollis mark, committing their trust to the brand that challenges their limits.



REGULATORS 1

SECOND STAGE COMPARISON CHART	2
FIRST STAGE COMPARISON CHART	2
200LX	3
150LX	4
DCX	5
DC7	5
HO2	6
REGULATOR ACCESSORIES	7

BUOYANCY 11

HD-200	9
L.T.S.	9
ST ELITE SYSTEMS	10
ST SYSTEMS	11
DT SYSTEM	12
SMS 75	13
KATANA 2	14
SYSTEMS OVERVIEW	15
ST WINGS	16
DT WINGS	17
SOLO	18
ELITE 2	18
STAINLESS AND ALUMINUM BACKPLATE 2.0	19
LX2 12LB WEIGHT SYSTEM	20
BACKPLATE BACKPAD 2.0	20
BUOYANCY ACCESSORIES	21
BUOYANCY COMPARISON CHART	22

INSTRUMENTS 23

LOW-PROFILE BRASS SPG	24
BRASS SPG	24
LARGE PONY BOTTLE GAUGE	25
INSTRUMENT ACCESSORIES	25

EXPOSURE 26

DX-300X	27
NEOTEK 8/7/6	28
NEOTEK 4/3	29
EXPOSURE COMPARISON CHART	30

BAGS 31

DUFFEL BAG	32
MESH DUFFEL BAG	32
REGULATOR BAG	32

MASKS AND FINS 33

M1	34
M3	34
M4	35
MASKS COMPARISON CHART	35
F1	36
F1 LT	36
F2	37
FIN ACCESSORIES	37
FIN COMPARISON CHART	37

SEEKER REELS 38

FINGER SPOOL 38

LIFT BAGS AND SMB'S 39

LIFT BAGS	39
SIGNAL MARKER BUOYS	39

GENERAL ACCESSORIES 40

PACKAGE PROMOS 41

WHILE SUPPLIES LAST 43

WARRANTY 47

SIZE CHARTS 49

REGULATORS

SECOND STAGE REGULATORS



200LX
CE



150LX
CE



150LX OCTO
CE

FIRST STAGE REGULATORS



DCX
CE



DC7
CE



HO2

COMPARISON CHARTS

SECOND STAGES	200LX	150LX	150LX OCTO
Valve Type	Demand	Demand	Demand
Pneumatically Balanced System	✓	✓	✓
Material	PVD-plated brass	Chrome-plated brass	Chrome-plated brass
Patented Dynamic Adjustment Automatically Maintains Inhalation Effort throughout the Dive	✓	✓	✓
Dive / Pre-Dive Switch	✓	✓	✓
Integrated Purge Button	✓	✓	✓
Patented Orthodontic Mouthpiece with High-Density Bite Tabs	✓	✓	✓
Nitrox Compatible	Standard to 40% (outside EU)	Standard to 40% (outside EU) Up to 99.9% on H02	Standard to 40% (outside EU)
Weight without hose	9.6 oz (273 g)	8.96 oz (254 g)	8.96 oz (254 g)
1st Stage Configuration	DCX	DC7, H02	N/A
Minimum Cracking Effort	.8 CIW	1.0 CIW	1.5 CIW
Factory Set Inhalation Effort	1.0 – 1.2 CIW	1.0 – 1.2 CIW	1.5 – 2.0 CIW
Work of Breathing - 198 ft (60 m)	.76 Joules	.90 Joules	.90 Joules

FIRST STAGES	DCX	DC7	H02
Type	Over-Balanced Diaphragm	Over-Balanced Diaphragm	Unbalanced Piston
Primary Material	DLC-plated Marine Brass	Forged Triple Chrome Plated Marine Brass, Stainless Valve Orifice	Marine Brass
Low Pressure Ports	5	4	4
High Pressure Ports	2	2	1
Swivel Turret	✓		
Nitrox Compatible	Standard to 40% (outside EU)	Standard to 40% (outside EU)	Standard to 100% (outside EU)
4,351 psi (300 Bar) DIN Fitting	Optional	Optional	Standard
Sealed Valve Design	✓	✓	
Coldwater / Environmental Seal Protection	✓	✓	
Weight	1.7 lb (78.4 kg)	21 oz (.59 kg)	.52 lb (1.14 kg)
Factory Set Intermediate Pressure	138 – 142 psi 9.5 – 9.8 Bar	138 – 142 psi 9.5 – 9.8 Bar	140 – 145 psi 9.7 – 10 Bar
Pressure Drop	20 psi 1.38 Bar	9 psi .6 Bar	13 psi .89 Bar
CE Approved	✓	✓	

200LX CE

"Whether it's a technical diver in a cave at 300 ft or a recreational diver on a reef at 40 ft, we only make our regulators one way: to the highest possible standard." — Bob Hollis

Our flagship regulator is the 200LX + DCX Regulator, designed by divers for divers. Every feature is designed with high performance and superior manufacturing at every step. The 200LX can be converted from a right-handed hose configuration to a left-handed hose configuration in a manner of minutes. The valve of the 200LX is "PVD" Industrial Plated. PVD is a super-hard coating that is by far the most durable coating available today. Superior quality that will outlast any traditional plating. The front metal ring, packing nut and inhalation knob are also "PVD" Plated.

All LX regulators come standard with MiFlex hoses and orthodontic mouthpieces with dual color tabs. It comes standard in both YOKE or DIN configuration

- Pneumatically balanced PVD plated brass valve results in smooth, easy breathing
- Reversible demand valve, can be converted from right-handed hose configuration to left-handed hose configuration
- Diver adjustable inhalation knob, allows diver to customize inhalation effort
- Adjustable Dive/Pre-Dive switch: large Venturi lever has a soft rubber grip, which makes it easy to locate and use
- Ergonomic exhaust channels bubbles away from field of view and reduces exhaust effort
- Improved orthodontic mouthpiece with dual color tabs
- PVD plated stainless steel metal ring, adjustable knob and Dive/Pre-Dive end cap
- MiFlex braided hose
- Paired with the DCX 1st stage
- 2-Year service interval with inspection



PHYSICAL VAPOR DEPOSITION (PVD)

Physical Vapor Deposition (PVD) is a time-tested proven technology that has been used for decades in other industries and is now available for specific Hollis products. PVD is a collective set of processes used to deposit thin layers of material, typically in the range of few nanometers to several micrometers. This state-of-the-art process provides a superior alternative to traditional "Chrome Plating", which is environmentally-friendly and provides long-lasting durability.

PART NO.	ITEM
240.2010.07.M	200LX + DCX YOKE
240.2011.07.M	200LX + DCX DIN
240.2000.LX	200LX 2ND STAGE BLK

150LX CE

150LX regulator provides the ultimate in breathing performance with a moderate price tag. Based on the 200LX but without the adjustable inhalation control and PVD plating.

This second stage is paired either with the lightweight and cold water rated DC7 first stage for the perfect lightweight travel combination for single tanks, or the HO2 first stage for deco stops and ready for oxygen service.

The front metal ring, packing nut and end cap are stainless steel.

All LX regulators come standard with MiFlex hoses and orthodontic mouthpieces with dual color tabs. It comes standard in both YOKE or DIN configuration.

Pneumatically balanced chrome-plated brass valve results in smooth, easy breathing

Reversible demand valve, can be converted from right-handed hose configuration to left handed hose configuration

Adjustable Dive/Pre-Dive switch: large Venturi lever has a soft rubber grip, which makes it easy to locate and use

Ergonomic exhaust channels bubbles away from field of view and reduces exhaust effort

Improved orthodontic mouthpiece with dual color tabs

Stainless steel cosmetic ring

MiFlex braided hose

Suitable for coldwater diving

Paired with the DC7 1st stage as primary regulator

Paired with HO2 1st stage as O2 regulator (O2 cleaned in sealed bag)

2-Year service interval with inspection



HO2



DC7



150LX OCTO

PART NO.	ITEM
240.1503.07.M	150LX + DC7 DIN
240.1504.07.M	150LX + DC7 YOKE
240.1502.19	150LX + HO2 DIN (OXYGEN REGULATOR)
240.3150.M	150LX OCTOPUS
240.1500.LX	150LX 2ND STAGE BLK
240.1501.LX	150LX 2ND STAGE GRN W/40" GRN MIFLEX HOSE

DCX CE

Hollis' flagship 1st stage is the DCX, designed by divers for divers. Every feature is designed with high performance and superior manufacturing at every step.

The DCX is surrounded by the most durable coating available today, DLC. The DCX was been redesigned to reduce weight while improving angle of LP and HP ports to maximize hoses routing. Hollis has made it an industry standard to include the 5th LP port making the DCX the diver's first choice for back-mounted doubles, sidemount or even for the recreational diver that demands the same performance as a technical diver.

DLC "industrial" plating - DLC (Diamond Like Carbon) is a super-hard coating that is by far the most durable coating available today. Superior quality that will outlast any traditional finish.

Unique over-balanced, diaphragm design. As the diver descends, the over-balancing feature allows the medium pressure gas in the hose to increase at a rate faster than ambient. This results in superior performance at depth.

2 HP ports and 5 LP ports for optimum hose routing

5th port allows for side-mount or twin cylinder set ups

An environmental dry system keeps water out of the main spring chamber thus preventing ice buildup and keeping salt and contamination out

Nitrox compatible to 40% (outside EU)

2 HP and 4 LP

DIN - 300 BAR



PART NO.	ITEM
240.3572	DCX - YOKE
240.3573	DCX - DIN

DC7 CE

High performance over-balanced DC7 1st stage provides progressively greater intermediate pressure as depth and gas density increases for superior gas delivery under the most extreme conditions.

Fixed hose routing ideal for both backmount and sidemount configuration

Environmental sealing prevents internal corrosion, contaminants, and icing of the first stage

Withstands rigorous CE standard for coldwater performance

Nitrox compatible to 40% (outside EU)

2 HP and 4 LP

DIN - 300 bar



PART NO.	ITEM
240.3567	DC7 - YOKE
240.3568	DC7 - DIN

H02

The H02 1st Stage is certified for up to 100% Oxygen Service thanks to highly specialized component materials and manufacturing processes. Cleaned and assembled in a clean room environment with specially designed materials, halocarbon based lubricants and color-coded for easy identification. The Regulator First Stage weighs 8.3 oz (235.3 g).

Flow-By Piston design 1st stage
Non-balanced flow-by piston
4,500 psi (300 Bar) DIN connection
DIN Hand-Wheel Connector: Oxygen green for easy identification for oxygen-use-only
Material: Durable and corrosion resistant marine-grade chrome plated brass
4 LP threaded ports
1 HP threaded port

PART NO.	ITEM
240.3558	H-02 PISTON - O2 - DIN



REGULATOR ACCESSORIES

PART NO.	ITEM
FIRST STAGES	
240.3558	H.O2 PISTON - O2 - DIN
240.3567	DC7 - YOKE
240.3568	DC7 - DIN
240.3572	DCX - YOKE
240.3573	DCX - DIN
SECOND STAGES	
240.3625	500SE 2ND - W/O HOSE
240.2000.LX	200LX 2ND STAGE BLK
240.1500.LX	150LX 2ND STAGE BLK
240.1501.LX	150LX 2ND STAGE GRN W/40" GRN MIFLEX HOSE
REGULATOR ACCESSORIES	
240.3001	OPRV - FIRST STAGE
240.3002	DIN TO YOKE ADAPTER
240.3004	ANGLE ADAPTER
240.7031.07	MOUTHPIECE, BK
240.8616.04	MOUTHPIECE, RED
240.9215	DCX DIN TO YOKE CONVERSION KIT
240.9211	DIN CONVERSION KIT - DC REG
240.4152	REG NECKLACE, ADJUSTABLE, BK
240.4018	LX COLOR KIT: YELLOW

PART NO.	ITEM
REGULATOR ACCESSORIES CONT'D	
240.4019	LX COLOR KIT: GREEN
240.4007	LX COLOR KIT: BLACK
240.4100	LX PLASTIC RING
240.4200	LX STAINLESS STEEL RING
240.4300	LX BLACK ANODIZED RING
204.2382.084	LP HOSE, 84"/213CM
204.2382.022.M	HOSE, MIFLEX, 22"/56CM
204.2382.032.M	HOSE, MIFLEX, 32"/81CM
204.2383.036.M	HOSE, MIFLEX, 36"/92CM YELLOW
204.2382.040.M	HOSE, MIFLEX, 40"/102CM GREEN
REGULATOR SERVICE KITS	
220.9206	SERVICE KIT, DC7, 1ST STG
220.9208	SERVICE KIT, 500SE 2ND
220.9210	SERVICE KIT, HO2 DIN 1ST
220.9213	SERVICE KIT, 212/321/221/100LX/150LX/200LX, 2ND STG
220.9214	SERVICE KIT, DC1/DC3/DCX, 1ST STG

BUOYANCY

COMPLETE HARNESS SYSTEMS



ST SYSTEMS
(ASSEMBLED)
€€



ST ELITE SYSTEMS
(ASSEMBLED)
€€



DT SYSTEM
(ASSEMBLED)
€€



ST WINGS
€€



DT WINGS
€€

BUOYANCY COMPENSATORS



HD-200
€€



L.T.S.
€€



SMS 75
€€



KATANA 2
€€

SIDEMOUNT

HARNESS ONLY



ELITE 2
€€



SOLO
€€

HD-200 €€

Comfort, function and durability, the HD-200 is everything the advanced sport diver could ask for. Fitted with a combination of Tech/Rec features that provide ultimate comfort and function. Heavy-duty construction and innovative design make this BC best in class.

35 lb (15.9 kg) bladder S and M sizes, 45 lb (20.4 kg) bladder L and XL sizes

1000D Cordura with PU lamination outer shell & 420D Nylon internal bladder

Contoured, lightweight backpack with backpad, lumbar support, and a rolled neoprene comfort neck

10 lb (4.5 kg) pinch-and-pull weight pockets

3 lb (1.36 kg) non-dumpable rear weight pockets

System weight: 9.4 lb (4.3 kg)

Traditional 2 in (5 cm) waist strap with stainless buckle

2 in (5 cm) Nylon crotch strap with quick release buckle and 2 in (5 cm) SS D-ring

Comfort molded backpad



L.T.S. €€

LIGHT TRAVEL SYSTEM

The Light Travel System (L.T.S.) is our warm water solution for traveling divers and destinations where weight restrictions are limited. Incorporating key features from our popular HD200, the L.T.S. is a weight integrated back inflation design with 30 lb (13.6 kg) of lift, suitable for single AL80s and steel 85s. Its simple, non-modular design stows easy and weighs only 5 lb (2.26 kg)

Ideal for traveling divers, weighs only 5 lb (2.26 kg)

30 lb (13.6 kg) of lift capacity

Comfortable backpad

Chest and hip D-rings for accessories or sling bottle

Rugged 1000D nylon outer cover with 420D internal bladder

5 lb (2.26 kg) dumpable integrated weight system

Available in four sizes SM, MD, LG, XL



PART NO.	ITEM
	HD200
208.1151.002	HD-200 BC, SM
208.1151.003	HD-200 BC, MD
208.1151.005	HD-200 BC, LG
208.1151.006	HD-200 BC, XL
	LTS
208.1110.002	LTS BC, SM
208.1110.003	LTS BC, MD
208.1110.005	LTS BC, LG
208.1110.006	LTS BC, XL

ST ELITE SYSTEMS CE

FULL-FEATURED COMFORT

The ST Elite System combines our most popular single tank components into one, including the Elite 2 harness for the ultimate in features and comfort in a backplate and harness system. This kit is preassembled from the factory and includes unique components depending on the configuration.

For warm water and travel destinations we offer the ST Elite Travel, which includes the ST22 Wing Aluminum Backplate 2.0, Delrin cam bands and Backplate Backpad 2.0. While those diving in colder waters can choose the ST Elite System, which includes the ST35 Wing, Stainless backplate 2.0 and Backplate Backpad 2.0.

ST Elite System shown here.



ST ELITE TRAVEL SYSTEM INCLUDES:

ST ELITE SYSTEM INCLUDES:



ST22 Wing



Elite Harness with Aluminum Backplate 2.0



Backplate Backpad 2.0



Delrin Cam Bands



ST35 Wing



Elite Harness with Stainless Steel Backplate 2.0



Backplate Backpad 2.0



Stainless Cam Bands

PART NO.	ITEM
208.8002.022	ST ELITE TRAVEL SYSTEM - XS/S
208.8003.022	ST ELITE TRAVEL SYSTEM - MD/LG
208.8005.022	ST ELITE TRAVEL SYSTEM - XL/XX

PART NO.	ITEM
208.8002.035	ST ELITE SYSTEM - XS/SM
208.8003.035	ST ELITE SYSTEM - MD/LG
208.8005.035	ST ELITE SYSTEM - XL/XXL

ST SYSTEMS CE

SIMPLE. RUGGED. MINIMALIST.

The ST System combines our most popular single tank components into one, both including the Solo harness for the ultimate in simplicity and streamlining. This kit is preassembled from the factory and includes unique components depending on the configuration.

For warm water and travel destinations we offer the ST Travel, which includes the ST22 Wing Aluminum Backplate 2.0, Delrin cam bands and Backplate Backpad 2.0. While those diving in colder waters can choose the ST System, which includes the ST35 Wing, Stainless Steel Backplate 2.0 and Backplate Backpad 2.0.



ST TRAVEL SYSTEM INCLUDES:



ST22 Wing



Solo Harness with Aluminum Backplate 2.0



Backplate Backpad 2.0



Delrin Cam Bands

ST SYSTEM INCLUDES:



ST35 Wing



Solo Harness with Stainless Steel Backplate 2.0



Backplate Backpad 2.0



Stainless Cam Bands

PART NO.	ITEM
208.8001.022	ST TRAVEL SYSTEM
208.8001.035	ST SYSTEM

DT SYSTEM CE

NO FRILLS EXPLORATION ESSENTIALS

The DT System is designed for the demanding doubles diver, with all the components for your backplate and wing kit in one, preassembled from the factory. This system includes the DT50 doubles wing with design that is ideal for larger double cylinders and colder waters. Also includes the Solo Harness, with Stainless Backplate 2.0 and backpad. Add a set of cam bands for the occasional single tank dive.

DT SYSTEM INCLUDES:



DT50 doubles wing



Solo Harness with
Stainless Steel Backplate 2.0



Backplate Backpad 2.0



PART NO.	ITEM
208.8001.050	DT SYSTEM

SMS 75 €

Hollis has become a leader in the sidemount market. It is not just a fad and not just a tool for cavers, it's here to stay and is growing. The SMS 75 is an evolution from years of sidemount development. While it will cater more to hardcore cave divers, SMS 75 was created to handle all environments. Proper trim is key, and the wing is designed to promote horizontal diving with increased lift towards the hips where it's needed most. The SMS 75 will also support rear-mounted tanks and reversible inflator positions.

Lift capacity is 40 lb (18 kg)
Trapezoid shape to promote horizontal trim
Adjustable and removable wing bungee
Designed for cave or open water sidemount
Cam slots for single tank and grommets at 11" (28cm) for banded doubles
Reversible Inflator and dump assembly
Rigging kit included: tank bungees, SS Cam bands, SS Bolt snaps and nylon line
Includes sternum strap and crotch strap
Inner located elbow to avoid overhead interference



PART NO.	ITEM
208.1375.003	SMS75 COMPLETE - SM/MD - SINGLE PKG
208.1375.005	SMS75 COMPLETE - LG/XL - SINGLE PKG
208.1375.006	SMS75 COMPLETE - XXL - SINGLE PKG

KATANA 2 €

Katana 2 is designed for the dedicated sidemount diver and every configuration imaginable, from warm water to cold, wet to dry, steel to aluminum tanks, open circuit to sidemount CCR. The Katana 2 is the answer to the evolving minimalist, low profile and modular sidemount category.

“QFS” Quick Fit System offers fine tuning of the torso height between small and large divers for a true one size fits all

Lift capacity is 40 lbs (18 kg) with innovative wing design to keep diver profile even lower than the competition and without the “turtle shell effect” which causes drag

Standard weight capacity 20 lbs. (9 kg) to offset added buoyancy in cold water with drysuits and thick undergarments

Design allows for an “H” or “Y” style harness configuration, depending on user preference

Easy to reach attachment points for accessories on the side of the wing

Innovative top dump allows venting of gas without breaking trim or reaching behind the wing like in other designs

Integrated sidemount CCR mount

Single bladder option ideal for recreational sidemount with two cylinders or in a drysuit for redundancy / Dual bladder option ideal for technical dives in a wetsuit

Stainless hardware hardcoated with Black PVD treatment

All fabric and embroidery black color



OPTIONAL ACCESSORIES:



Storage Pocket



Butt-Plate



Rigging Kit



H Style Kit



Katana 2 Red



Katana 2 Dual

PART NO.	ITEM
208.1381	KATANA 2
208.1382	KATANA 2 DUAL
208.1265	KATANA BUTTPLATE (BACKPLATE COMPATIBLE)
208.1266	STORAGE POCKET WITH SS SNAPS
240.1550	SMS MAINS RIGGING KIT
208.1383	KATANA 2 H STYLE KIT

HOLLIS BACKPLATE SYSTEMS OVERVIEW

									
SYSTEMS:	ST SYSTEM	ST TRAVEL SYSTEM	ST ELITE SYSTEM XS/SM	ST ELITE SYSTEM MD/LG	ST ELITE SYSTEM XL/XXL	ST ELITE TRAVEL SYSTEM XS/SM	ST ELITE TRAVEL SYSTEM MD/LG	ST ELITE TRAVEL SYSTEM XL/XXL	DT SYSTEM
COMPONENTS:	208.8001.035	208.8001.022	208.8002.035	208.8003.035	208.8005.035	208.8002.022	208.8003.022	208.8005.022	208.8001.050
ST 22 WING W/ SLOTS (22LBS) 208.1254.022		•				•	•	•	
ST 35 WING W/ SLOTS (35LBS) 208.1254.035	•		•	•	•				
DT 50 WING (50LBS) 208.1254.050									•
DT 45 DUAL WING (45LBS) 208.1256.045									
SOLO HARNESS SYSTEM 208.1260	•	•							•
ELITE 2 HARNESS SYSTEM - XS - SM 208.1222.001			•			•			
ELITE 2 HARNESS SYSTEM - MD - LG 208.1222.003				•			•		
ELITE 2 HARNESS SYSTEM - XL - XXL 208.1222.006					•			•	
BACK PLATE BACK PAD, 2.0 208.1267	•	•	•	•	•	•	•	•	•
ALUMINUM BACK-PLATE, BLACK, 2.0 208.1291.000		•				•	•	•	
STAINLESS STEEL BACKPLATE, 2.0 208.1296.000	•		•	•	•				•
CAM BAND (STAINLESS) 208.1070.010	•		•	•	•				
CAM BAND (DELIRIN) 208.1070.020		•				•	•	•	

ST WINGS CE

ST wing design features a 360° tapered profile, to increase lift towards the hips, promoting better horizontal trim in dive position while still allowing perfect surface floatation.

The ST22 is designed for warm water dives in aluminum cylinders, where low lift and maximum streamlining is preferred. Alternatively the ST35 is an excellent choice for a go-anywhere wing with the added lift for those local cold-water dives and heavier steel cylinders, but still streamlined enough for travel destinations.

Tank slots and tank cradle are included on both models, which allows you to connect your wing and backplate without the need for a single tank adapter plate. This reduces weight and unnecessary accessories while traveling.

The bladder is a two-piece design, with a rugged 1680 Cordura® nylon outer shell to prevent abrasion and punctures, and a 420-denier nylon inner bladder to maintain the buoyancy. The lower OPV is easy to reach for venting gas while horizontal or heads down, and the inflator design is a K-style with a rugged crushproof rubber hose for easy positioning and oral inflation should you need to.

ST22 - 22 lb lift (10 kg)

ST35 - 35 lb lift (16 kg)

Welded flange and one piece retainer for servicing without the need for tools

HD Laminated 1680D Cordura® outer shell

420 nylon internal bladder

Elbow offset to avoid tank valve/regulator interference and streamlined hose routing

Lower left pull relief valve

Cam band slots and tank cradle built in

5 YEAR WARRANTY

CORDURA
F A B R I C



ST 22 WING



ST 35 WING

PART NO.	ITEM
208.1254.022	ST 22 WING W/SLOTS 22 LB (10 KG)
208.1254.035	ST 35 WING W/SLOTS 35 LB (16 KG)

DT WINGS CE

The DT line of wings are designed for double cylinders. The DT50 features a 360° tapered profile for heavier cylinders, to increase lift towards the hips, promoting better horizontal trim in dive position while still allowing perfect surface flotation. While the DT45 Dual features a more consistent 360° flotation for lighter aluminum cylinders with a redundant air cell. Target audience for the DT45 dual is warm water, banded aluminum cylinders in a wetsuit where backup inflation is mandatory. While the DT50 is focused on the dedicated drysuit diver, with heavier cylinders in cold water.

Tank slots are included on both models, which allows the occasional single tank dive without the need for a single tank adapter plate. This reduces weight and unnecessary accessories while traveling.

The bladder is a two-piece design, with a rugged 1680 Cordura® nylon outer shell to prevent abrasion and punctures, and a 420-denier nylon inner bladder to maintain the buoyancy. The lower OPV is easy to reach for venting gas while horizontal or heads down, and the inflator design is a K-style with a rugged crushproof rubber hose for easy positioning and oral inflation should you need to.

DT50 - 50 lb (23 kg) lift
DT45 Dual - 45 lb (20 kg) lift
Welded flange and one piece retainer for servicing without the need for tools
HD Laminated 1680D Cordura® outer shell
420 nylon internal bladder
Central elbow to avoid tank valve/regulator interference
Lower left pull relief valve
Cam band slots
5 YEAR WARRANTY



DT 50 WING



DT 45 DUAL WING

PART NO.	ITEM
208.1254.052	DT 50 WING (50 LBS)
208.1256.045	DT45 DUAL WING (45 LBS)

SOLO €€ HARNESS SYSTEM

Designed to meet all the needs of demanding technical divers, the Solo Harness System is clean, simple, and foolproof!

Streamlined design enhances comfort with less drag

Continuous one piece harness system limits failure potential

Stainless steel D-rings and cam buckle included

Removable shoulder pads accept stainless steel D-rings

System weight (harness only): 1 lb (0.45kg)

Solo Harness: One Size, Trim-to-fit

Backplate
Available
Separately



ELITE 2 €€ HARNESS SYSTEM

Tech/Rec is at its best with the Elite 2 Harness. The Elite 2 Harness System offers you all the features of a technical harness with the added comfort and adjustability that recreational divers look for.

Adjustable shoulder straps with quick release buckles

Easier donning and doffing of equipment

Adjustable and removable shoulder pads

316 marine grade stainless steel

Adjustable sternum strap included allows for custom fit

System weight (harness only): 1.7 lb (0.77 kg)

Backplate
Available
Separately



PART NO.	ITEM
208.1260	SOLO HARNESS SYSTEM
208.1222.001	ELITE 2 HARNESS SYSTEM - XS - SM
208.1222.003	ELITE 2 HARNESS SYSTEM - MD - LG
208.1222.006	ELITE 2 HARNESS SYSTEM - XL - XXL
208.1291.000	ALUMINUM BACKPLATE, BLACK, 2.0
208.1296.000	STAINLESS STEEL BACKPLATE, 2.0

STAINLESS AND ALUMINUM BACKPLATES 2.0

Our 2.0 backplate line is the foundation for the Hollis technical harness systems. Both feature improved ergonomics for a comfortable fit, but are still short enough to fit smaller frame divers.

The aluminum version weighs in at 1.5 lb or just under a kilo, and the stainless version weighs in at 6.5 lb or just under 3 kilos.

Both are laser cut and CNC bent, which give this awesome new appearance. The stainless version is 304 stainless and has a bead blast finish to avoid scratching, so it will continue to look this way after many years of use. The Aluminum version is laser cut from 6061 aluminum and hard anodized in black for a marine grade finish.

Geometry of the webbing slots is similar to our prior design to ensure reverse compatibility for all Hollis buoyancy accessories, so if you have an old Hollis harness, wing or weight system, this plate will fit.

Both of these are available individually and as part of the Hollis Complete Systems.

STAINLESS BACKPLATE 2.0

AISI 304 Stainless

4mm thickness

Sandblasted finish

Electropolished & chemically passivated

Laser cut & CNC bent

6.5 lb (3 kg)

ALUMINUM BACKPLATE 2.0

EN AW 6061 aluminum

3mm thickness

Hard Anodized Marine Black

Laser cut & CNC bent

1.5 lb (1 kg)



STAINLESS STEEL
BACKPLATE 2.0



ALUMINUM
BACKPLATE 2.0

PART NO.

ITEM

[208.1291.000](#)

ALUMINUM BACKPLATE, BLACK, 2.0

[208.1296.000](#)

STAINLESS STEEL BACKPLATE, 2.0

LX2 12LB WEIGHT SYSTEM

The LX2 provides weight versatility options with an ease of use design. Simple pinch and pull buckle design securely stows your weights during the dive. There is also a large nylon handle to carry or easily ditch your weights if needed. The pouch itself is zippered and holds 12 lb (5.4 kg) total, but is partitioned to isolate weights within the pouch. The benefit there is if you only have say 5 lb (2.3 kg) in the pocket, the partition will avoid it shifting around during the dive. This system is also reverse compatible to allow use with older Hollis backplates and harnesses.



BACKPLATE BACKPAD 2.0

The Backplate Backpad 2.0 is a comfortable two-piece design with added lumbar support, which easily pivots out of the way of your doubles tank bolts and cam bands when assembly or disassembly is needed. Sold as an accessory but also included with our 2.0 Technical Harness systems.

Note: Only compatible with Hollis 2.0 Backplates.



PART NO.	ITEM
	LX2 WEIGHT SYSTEM
208.0016	LX2 WEIGHT SYSTEM (12LB) - SOLO, ELITE2, HTS2
208.0027	LX2 WEIGHT POUCH (12LB) - REPLACEMENT
	BACKPLATE BACKPAD 2.0
208.1267	BACKPLATE BACKPAD 2.0

BUOYANCY ACCESSORIES

PART NO.	ITEM
208.1291.000	ALUMINUM BACKPLATE, BLACK, 2.0
208.1296.000	STAINLESS STEEL BACKPLATE, 2.0
240.1550	SMS MAINS RIGGING KIT
240.1700	DELUXE STAGE KIT-SMALL FOR AL40
240.1800	DELUXE STAGE KIT-LARGE FOR AL80
208.0016	12LB LX2 WEIGHT SYSTEM - SOLO, ELITE2, HTS2
208.0027	12LB LX2 WEIGHT POUCH - REPLACEMENT
208.0025.000	10LB WEIGHT POUCH - REPLACEMENT -- FOR LX - (ELITE, SOLO, HTS2) (SINGLE)
208.0026.000	WT- POCKET- HD200- SINGLE-REPLACE
208.0030.000	5LB NON-DITCHABLE OPTIONAL POCKETS (PAIR)
208.0042	SMS WEIGHT SYSTEM PLATE
208.1060.016	INFLATOR SYSTEM W/ ELBOW 16" /41CM
208.1061.016	INFLATOR SYSTEM W/ RE VALVE 16" /41CM
208.1062	ELBOW FITTING
208.1063	INFLATOR ONLY, STD K STYLE
208.1065.013	CORRUGATED HOSES 13" /33CM
208.1065.016	CORRUGATED HOSES 16" /41CM
208.1065.019	CORRUGATED HOSES 19" /48CM
204.2381.012	LP INFLATOR HOSE, 12"/25CM (KATANA 2)
204.2381.022	LP INFLATOR HOSE, 22"/56CM
204.2381.030	LP INFLATOR HOSE, 30"/76CM
204.2381.032	LP INFLATOR HOSE, 32"/81CM
208.1034	HTS DOUBLE MOUNTING PLATES (SET OF TWO)
208.1070.002	SINGLE TANK ADAPTER BOLT KIT
208.1070.010	CAM BAND (STAINLESS)
208.1070.020	CAM BAND (DELFIN)
208.1071.001	SINGLE TANK ADAPTER W/BOLTS & NUTS, V2
208.1322	RUBBER TANK WRAP KIT (PAIR)
208.1026	OP VALVE PULL DUMP
208.1028	STAINLESS QUICK RELEASE BUCKLE

PART NO.	ITEM
208.1030	MASK POCKET
208.1032	CROTCH STRAP, 2-0-INCH WEBBING W/ SCOOTER RING
208.1038	SMS50/SMS75 RAIL KIT (1 SET)
208.1040	BUNGEE KIT PAIR, SMS75 HARNESS
208.1267	BACK PLATE BACK PAD, 2.0
208.3350	RE CAP
208.336.337	RE SEAT
208.568.210	O-RING
19720.001.003	VALVE HOUSING
208.340.13	VALVE WITH 13" CABLE
208.340.16	VALVE WITH 16" CABLE
208.340.19	VALVE WITH 19" CABLE
208.3430	SPRING
208.1065.013	CORRUGATED HOSES 13" /33CM
208.1065.016	CORRUGATED HOSES 16" /41CM
208.1065.019	CORRUGATED HOSES 19" /48CM
208.22739	RUBBER RING
208.1254.022.B	ST 22 WING, BLADDER ONLY (22 LB/10 KG)
208.1254.035.B	ST 35 WING, BLADDER ONLY (35 LB/16 KG)
208.1254.052.B	DT 50 WING, BLADDER ONLY (50 LB/22.7 KG)
208.1256.045.B1	DT 45 DUAL WING, BLADDER ONLY, PRIMARY (45 LB/20.5 KG)
208.1256.045.B2	DT 45 DUAL WING, BLADDER ONLY, REDUNDANT (45 LB/20.5 KG)

BUOYANCY COMPARISON CHART

BACKMOUNT

	Adjustable	Quick Release	Backpad	Single Cylinder	Twin Cylinder	Rapid Exhaust Valve	Comfort Padding	Weight Integrated
HD-200	✓	✓	✓	✓		✓	✓	✓
L.T.S.	✓	✓	✓	✓		✓	✓	✓
ST Elite System / ST Elite Travel System	✓	✓	✓	✓			✓	Optional
ST System / ST Travel System	✓		✓	✓				Optional
DT System	✓		✓		✓			Optional

SIDEMOUNT

	Adjustable	Quick Release	Backpad	Backmount Compatible	Dual Bladder	Comfort Padding	Weight Integrated
SMS 75	✓	✓	✓	✓		✓	Optional
KATANA 2	✓		✓				✓
KATANA 2 DUAL	✓		✓		✓		✓

ST & DT SERIES WINGS

	Single Cylinder	Twin Cylinder	Single Bladder	Dual Bladder
ST22	✓		✓	
ST35	✓		✓	
DT50		✓	✓	
DT45 DUAL		✓		✓

*ST System, ST Travel System, Solo Harness, Katana 2 Single, Katana 2 Dual BCD's are one size fits all

INSTRUMENTS



LOW-PROFILE BRASS SPG

CE



BRASS SPG

CE



LARGE PONY
BOTTLE GAUGE

CE

LOW-PROFILE BRASS SPG

The Low-Profile Brass SPG with scratch-resistant lens, high-contrast background, luminescent needle, low weight, and small size allow for a more streamlined rigging and are ideal for stage and deco bottles.

High-contrast black background and white markings

Luminescent needle

Standard with Air Spool and Viton O-rings

Suitable for oxygen service

Available in 0-5000 PSI or 0-400 BAR

Satin coated brass housing coated brass housing with Bourdon tube

Scratch-resistant plastic lens

1.5 in (38.1 mm)



BRASS SPG

The Hollis Brass Pressure Gauge is a solid and compact brass SPG. This rugged, easy-to-read gauge works great as a primary or even backup pressure gauge for the beginner to the most advanced technical diver. Gauge has a luminescent face for easy reading in low light or night diving conditions. Pressure gauge module has a durable tempered glass scratch resistant lens.

Luminescent faceplate

Standard with Air Spool and Viton O-rings

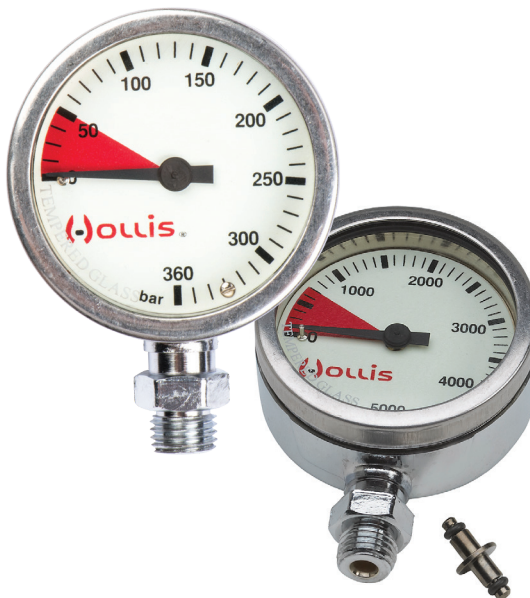
Suitable for oxygen service

Available in 0-5000 PSI or 0-360 BAR

Chrome-plated brass housing with Bourdon tube

Scratch-resistant tempered glass

2 in (50.8 mm) size



PART NO.	ITEM
----------	------

204.2311	PRESSURE GAUGE MODULE BAR -- METAL W/O BOOT
--------------------------	---

204.2309.07	PRESSURE GAUGE MODULE BAR LOW-PROFILE BLK-- METAL W/O BOOT
-----------------------------	--

LARGE PONY BOTTLE GAUGE CE

The Hollis Pony Bottle Gauge is a tiny gauge that easily connects to the 7/16" (1.1 cm) high-pressure port of your pony bottle regulator or other alternate tank regulator to show pressure in an easy-to-read display. Any diver who has used a pony bottle knows the hassle involved with trying to find out how much air is in the tank. Switching regulators to view the primary pressure gauge or adding a separate pressure gauge to the pony bottle is a problem. Now with the Hollis Pony Bottle Gauge, all those headaches are over.



Eliminates use of standard hoses pressure gauge

Compact small design

Large numbers and colored indicators easy-to-read-display

Equipped with HP O-Ring Ready to Install

Suitable for oxygen service

Threads directly 7/16" (1.1 cm) First Stage HP Port

Available in 0-400 BAR

Ideal for pony bottles, deco bottles or back-up air supplies

One-way safety valve

PART NO.	ITEM
204.2318	LG PONY BOTTLE GAUGE - BAR

INSTRUMENT ACCESSORIES

PART NO.	ITEM
204.2310.S	AIR SPOOL METAL GAUGES
204.2380.006	H/P HOSE - 6"/15CM
204.2380.009	H/P HOSE - 9"/23CM
204.2380.024	H/P HOSE 24"/61CM
204.2380.028	H/P HOSE 28"/71CM

EXPOSURE

DRYSUIT



DX-300X
CE

SEMI-DRY



NEOTEK 8/7/6 V2 SEMIDRY
CE

WETSUIT



NEOTEK 4/3 WETSUIT
CE

DX-300X CE

DRYSUIT

- The DX-300X is our flagship technical drysuit, developed over three years in a variety of demanding conditions including cave and wreck diving where performance is critical. Benefit from comfort, maneuverability, and long-wearing durability.
- The DX-300X is the benchmark expedition-grade drysuit, made from TriLaminate Cordura® for superior strength and comfort. Overall material weight is 700 g/sq.
- “Outer Layer” is a heavy-duty Cordura® which offers superior puncture and abrasion resistance with incredible tear strength in excess of 300N
- The middle “Butyl Mass” is constructed of 12 layers to provide long-term water integrity with superb chemical and ozone resistance
- “Inner Liner” is a silk weave polyester offering the optimum comfort and softness with easy donning and doffing
- Our patented BIAS cut combined with a telescopic torso increases freedom of movement, but allows for a closer fit reducing air migration
- The wide, flat seam construction minimizes the risk of leaks in high risk areas
- Fitted with YKK zipper
- Fitted with SI TECH® Neck Tite system with Silicon seals
- Fitted with SI TECH® cuff ring wrist system with Silicon seals as standard
- Two large Velcro® bellows pockets with an internal D-ring
- Double thick kneepads
- 5mm neoprene socks
- Adjustable suspenders included



Socks included with suit / Canvas overboots available from BARE



PART NO.	ITEM
277.3000.001	DX-300X W/NEOPRENE SOCKS - XS
277.3000.002	DX-300X W/NEOPRENE SOCKS - S
277.3000.003	DX-300X W/NEOPRENE SOCKS - M
277.3000.004	DX-300X W/NEOPRENE SOCKS - ML
277.3000.005	DX-300X W/NEOPRENE SOCKS - L
277.3000.006	DX-300X W/NEOPRENE SOCKS - XL
277.3000.007	DX-300X W/NEOPRENE SOCKS - XXL
277.3000.009	DX-300X W/NEOPRENE SOCKS - XXXL

NEOTEK 8/7/6 V2 CE

SEMI-DRY

Enjoy the warmth of our Neotek 8/7/6 V2 coldwater hooded semi-dry. Constructed from a compression resistant 8/7/6 mm neoprene and a Hollis exclusive ThermaSkin inner liner. Includes a front neckdam with revolutionary G-lock horizontal front zipper for easy on/off and a tight barrier against water intrusion. Arms and legs are also sealed against leaks with an internal dam. All seams are double-glued and butt-joined with a blind stitch construction which is all covered by a unique liquid seam. Fitted with generous pockets on both the left and right thigh and comes in 9 different sizes.

8/7/6 mm compression-resistant and superstretch neoprene mix

Exclusive ThermaSkin inner liner

G-lock horizontal front zipper with internal bib

Neck, wrist and ankle internal dams

Seams are double-glued and butt-joined with a blindstitch

Liquid glued seams cover entire suit

Tech-friendly thigh pockets on both left and right thigh

Attached hood standard

Seams sewn and double taped for extreme protection



ECO-FRIENDLY NEOPRENE

Neoprene production waste is recycled and reused which minimizes waste in landfills.



PART NO.	ITEM
277.2810.002	NEOTEK V2 SEMI-DRYSUIT, UNISEX, SM
277.2810.003	NEOTEK V2 SEMI-DRYSUIT, UNISEX, MD
277.2810.004	NEOTEK V2 SEMI-DRYSUIT, UNISEX, ML
277.2810.005	NEOTEK V2 SEMI-DRYSUIT, UNISEX, LG
277.2810.005.SH	NEOTEK V2 SEMI-DRYSUIT, UNISEX, L/SHORT
277.2810.006	NEOTEK V2 SEMI-DRYSUIT, UNISEX, XL
277.2810.006.SH	NEOTEK V2 SEMI-DRYSUIT, UNISEX, XL/SHORT
277.2810.007	NEOTEK V2 SEMI-DRYSUIT, UNISEX, XXL
277.2810.008	NEOTEK V2 SEMI-DRYSUIT, UNISEX, XXXL

NEOTEK 4/3 CE

WETSUIT

The Neotek 4/3 wetsuit is designed for warm-water technical dives—where exposure protection is still critical—but conditions are mild. This model follows the same pattern and design as our revolutionary 8/7/6 semi-dry and it features a horizontal front zipper and attached hood for maintaining warmth over extended dive times.

This NeoTek is constructed from a compression-resistant 4/3mm neoprene and a Hollis-exclusive ThermaSkin inner liner. It includes a front neckdam with revolutionary G-lock horizontal front zipper for easy on/off and a tight barrier against water intrusion. Arms and legs are also sealed against leaks with a rolled cuff edge. All seams are double-glued and butt-joined with a blind stitch construction which is all covered by a unique liquid seam.

And of course, true to the spirit of NeoTek, the suit comes fitted with generous utility pockets on both the left and right thigh and comes in 9 different sizes.

4/3mm compression-resistant and superstretch neoprene mix
Exclusive ThermaSkin inner liner
G-lock horizontal front zipper with internal bib
Seams are double-glued and butt-joined with a blindstitch
Seams sewn and double-taped for extreme protection
Liquid-glued seams cover entire suit
Utility thigh pockets on left and right thigh
Attached hood comes standard



ECO-FRIENDLY NEOPRENE

Neoprene production waste is recycled and reused which minimizes waste in landfills.



PART NO.	ITEM
277.2910.002	NEOTEK 4/3 WETSUIT UNISEX, SM
277.2910.003	NEOTEK 4/3 WETSUIT UNISEX, MD
277.2910.004	NEOTEK 4/3 WETSUIT UNISEX, ML
277.2910.005	NEOTEK 4/3 WETSUIT UNISEX, LG
277.2910.005.SH	NEOTEK 4/3 WETSUIT UNISEX, L/SHORT
277.2910.006	NEOTEK 4/3 WETSUIT UNISEX, XL
277.2910.006.SH	NEOTEK 4/3 WETSUIT UNISEX, XL/SHORT
277.2910.007	NEOTEK 4/3 WETSUIT UNISEX, XXL
277.2910.008	NEOTEK 4/3 WETSUIT UNISEX, XXXL

EXPOSURE COMPARISON CHARTS

	Entry	Material	Socks	Unisex	Pockets	Hood Attached
--	-------	----------	-------	--------	---------	---------------

DRYSUIT

DX-300X	Front	Trilaminate Cordura®	5mm Neoprene	✓	✓	
---------	-------	----------------------	--------------	---	---	--

SEMI-DRY

Neotek 8/7/6	Front	8/7/6 Neoprene		✓	✓	✓
--------------	-------	----------------	--	---	---	---

WETSUIT

Neotek 4/3	Front	4/3 Neoprene		✓	✓	✓
------------	-------	--------------	--	---	---	---

BAGS



DUFFEL BAG



MESH DUFFEL BAG



REGULATOR BAG

DUFFEL BAG

Made from a durable tarpaulin material, the Hollis Duffel is an excellent gear bag.

The bag is tough and rugged, extremely resistant to abrasions and punctures. It contains one main compartment featuring a tough D-zipper and one internal zippered pocket. Carrying the bag is an easy task with backpack shoulder straps. It also incorporates carry handles on both ends of the bag and two straps with padded handles. The bag is large enough to contain all of your dive gear and even features an ID pocket on top just by chance that someone has the same cool Hollis duffel bag as you.

D-zip main compartment with internal zippered pocket	
ID pocket on top	Backpack shoulder straps
Carry handles on both ends	Straps with padded handle
Rugged construction	Capacity: 95 Liters
Dimensions: 28 in x 16 in x 14 in (71cm x 41cm x 35.5cm)	



MESH DUFFEL BAG

Made from laminated nylon mesh, the Hollis Mesh Duffel is a great way to air out your wet equipment while keeping everything secure.

D-zip main compartment	
Shoulder carry strap included	
Carry straps with padded handle	
Rugged construction	



REGULATOR BAG

#10 YKK self-healing zippers	
Interior Velcro® loops	
1620 Denier Ballistic Nylon construction	
Dimensions: W 12 in. (30.5 cm), H 4.35 in. (11 cm), L 12 in. (30.5 cm)	



PART NO.	ITEM
217.6506.01	BAG, DUFFLE
217.6506.02	BAG, DUFFLE MESH
PART NO.	ITEM
217.6506.04	BAG, REGULATOR

MASKS AND FINS



M1
€€



M3
€€



M4
€€



F1
€€



F1 LT
€€



F1 LT WHITE
€€



F1 LT YELLOW
€€



F2
€€

M1 CE

The M1 Mask raises the bar for optical quality and distortion-free vision. The lens is made from a highly transparent extra clear glass which is valued for its unique appearance and optical qualities. The low iron oxide content gives it optimum clarity. Its light transmittance is greater than that of conventional glass. The use of UltraClear glass results in a virtually colorless product which allows objects to remain vivid and natural. This makes the lens distortion-free and helps improve visibility, even in low-light conditions underwater.

Frameless 100% pure silicone skirt

UltraClear lenses

Wide vision and low volume



M3 CE

The M3 Mask provides visibility, the most important aspect of any dive, with distortion-free vision and superior fit. This low-profile design uses a rigid frame and two lenses with an UltraClear glass. The low iron content produces a higher light transmittance and a reduced green tint inherent in other glasses. This makes the lenses distortion free and helps improve color and visibility in low-light conditions underwater. Optical lenses from -1.5 to -8.0 diopters available.

100% pure silicone skirt

UltraClear lenses

Wide vision and low volume

4-way buckle design for superior comfort and storage if needed



GoPro mount
sold separately

M3 GOPRO MOUNT

Mount your GoPro camera and housing on your M3 Mask for hands-free photography and video. Made from durable glass filled nylon, the M3 GoPro Mount is easy-to-install on the M3 with just a hex key wrench. Once mounted, your camera and housing can be attached to your mask when needed and you can film your underwater adventures with ease.

PART NO.	ITEM
	M1 MASK
205.4500.07	MASK M1
	M3 MASK
205.4700.07	MASK M3 (BLACK)
205.4700.10	MASK M3 (WHITE/BLACK)
205.1001	M3 GOPRO MOUNT
	MASK STRAP
205.4500.STRAP	SILICONE MASK STRAP
205.1000	NEOPRENE MASK STRAP
205.1001	M3 GOPRO MOUNT

M4

When choosing a mask, fit and field of vision come first. The M4 Mask gives you the best of both worlds, fitting a wide variety of faces and offering superior peripheral and vertical vision. It is low profile, stows easy and carries an excellent value.

- Frameless silicon skirt
- Rugged mask box and adjustable mask strap included
- Increased vision and low volume



PART NO.	ITEM
	M4 MASK
205.4800.07	MASK M4

MASKS COMPARISON CHART

	Frameless	Rigid Frame	Ultra Clear Glass	Standard Glass	Optical Lenses
M1	✓		✓		
M3		✓	✓		✓
M4	✓			✓	

F1 €

The "Original" F1 fin blends graceful movement, power, and bulletproof construction making it the standard in technical diving.

High grade, heavy-duty rubber construction

Angled strap mounts for comfort and a better transition of power

Spring heel straps with easy-grip heel tab

Multiple strap mounting positions for a fine-tuned fit

Vented blade to reduce stress while accelerating

Generously sized for drysuit boots



F1 LT €

The F1 LT is a shorter and slightly lighter version of the original F1 molded from SEBS. Now available in white and yellow!

Short blade for easier finning in confined spaces

Angled strap mounts for comfort and a better transition of power

Spring heel straps with easy-grip heel tab

Multiple strap mounting positions for a fine-tuned fit

Vented blade reduces stress while accelerating water over blade

Generously sized for drysuit boots

PART NO.	ITEM
	M4 MASK
205.4800.07	MASK M4
	F1
214.2200.005	F1 REG
214.2200.006	F1 XL
214.2200.007	F1 XXL
	F1 LT
214.2201.004	F1 LT SM
214.2201.005	F1 LT REG
214.2201.006	F1 LT XL
214.2201.007	F1 LT XXL
214.2211.005	F1 LT REG, WHITE
214.2211.006	F1 LT XL, WHITE
214.2211.007	F1 LT XXL, WHITE
214.2207.005	F1 LT REG, YELLOW
214.2207.006	F1 LT XL, YELLOW
214.2207.007	F1 LT XXL, YELLOW

F2 CE

Increase your power-to-weight ratio. The patented F2 is designed to add blade surface on both the downstroke and upstroke to increase your efficiency with any type of kick.

High grade, heavy-duty monoprene construction

Angled strap mounts for comfort and a better transition of power

Spring heel straps with easy-grip heel tab

Multiple strap mounting positions for a fine-tuned fit

Vented blade to reduce stress while accelerating

Generous foot pocket with 3 sizes—Small, Regular and XL



PART NO.	ITEM
214.2300.002	F2 SMALL
214.2300.005	F2 REG
214.2300.006	F2 XL

FIN ACCESSORIES

214.8002	SPRING STRAP KIT SMALL, F1/F2
214.8006	SPRING STRAP KIT REG/XL, F1/F2
214.8007	SPRING STRAP KIT XXL, F1 /F2

FIN COMPARISON CHART

	Material	Angled Strap Mounts	Spring Heel Straps	Vented Blade	Generous Foot Pocket	Weight Per Fin
F1	Rubber	✓	✓	✓	✓	3.5 lb (1.6 kg)
F1 LT	SEBS Compound	✓	✓	✓	✓	2.8 lb (1.27 kg)
F2	Monoprene	✓	✓	✓	✓	2.2 lb (1 kg)

SEEKER REELS

SEEK AND DEPLOY

A reliable and robust primary reel that's easy to deploy is a necessity whether discovering a virgin cave or exploring a deep shipwreck. Our 220 ft (61m) and 400 ft (122m) primary reels combine simplicity with durability so you can get on with your deepest explorations without any worries about performance.

Spool machined with high-tensile Delrin® for durability and abrasion resistance

Handle is 6061-T6 hard anodized aluminum to protect against cracking or breaking

Easy deployment with left and right handle designed for easy switching between hands

Knurled stainless steel lockdown screw for simple "on/off" with gloves on

Ultra-bright lines in two sizes: 220 ft (61m) is perfect for short distances such as jumps or shooting an SMB, and 400 ft (122m) is ideal for reaching the main cave line or for the deepest explorations

Robust 316 Stainless hardware

Built in rubber stop to prevent backing out of the lockdown and precise adjustment

Molded line stopper included with both models

Convenient winding knob provides easy and comfortable grip with gloves on

Close tolerances to prevent line trapping during heavy use

Sized appropriately for both warm and cold water wearing dry gloves

Radiused edges for comfort

All parts engineered with the strictest tolerances to eliminate line traps or failures when spooling



FINGER SPOOL

The Finger Spool is most often used as a gap reel, for short distance exploration or for shooting an SMB. Small and low-profile, a spool fits nicely out of the way in a pocket or clipped off to a D-ring. The holes in the side allow for clipping in a double-ended snap anywhere along the perimeter of the spool to keep the line tight when not in use.

Available in 100 ft (30 m)

The 100' Finger Spool is often used for shooting lift bags or as safety reel

Smaller spools for safety and jump reels

Spool fits in drysuit pocket, utility pocket or clipped off to a D-ring

#24 white braid cave line

Stainless double ended clip included

NEW!



PART NO.	ITEM
203.8200	SEEKER REEL, 200' (61 m)
203.8400	SEEKER REEL, 400' (122 m)

PART NO.	ITEM
203.8100.2	100' FINGER SPOOL

LIFT BAGS

60 AND 125 LB LIFT

You never know what you might find on a dive, so be prepared and always pack a Lift Bag. The Hollis 60 lb (27.2 kg) or 125 lb (56.7 kg) Lift Bag is just what you need to raise or mark items.

60 lb (57 kg) or 125 lb (56.7 kg) lift capacity

Tear and mildew-resistant durable nylon fabric

High-visibility bright orange for easy identification

Over pressure relief valve with pull dump

Stainless D-ring for line attachment

Handle at the top of the lift bag for easy handling



SIGNAL MARKER BUOYS

The Hollis Signal Marker Buoy (SMB) is an essential safety device all divers should carry on every dive. The SMB is the smart-way for a diver to mark their location when making safety stops, completing mandatory decompression stops, and signaling the boat if they surface a distance away from the boat.

Signal Marker Buoy is a closed cell design made from durable 300-D polyester material with Radio Frequency (RF) Welded Seams. The Hollis SMB also has a sturdy nylon webbing strap loop with a stainless steel D-Ring for attachment to a reel or anchor line along with a wrist lanyard for hand-held use.

6 ft (1.8 m), 3 ft (1 m)

Available in Yellow or Orange

Oral inflation

Stainless oral inflate valve

Open cell / closed cell

Quick Dump valve included



MARKER BUOY
WITH SLING POUCH



CLOSED CELL



PART NO.

ITEM

[208.2060.03](#)

60LB LIFT BAG ORANGE

[208.2125.03](#)

125LB LIFT BAG ORANGE

[208.2021.03](#)

SIGNAL MARKER BUOY, CLOSED CELL, COMPACT, ORANGE

[208.2022.03](#)

SIGNAL MARKER BUOY, W/ SLING POUCH, ORANGE

[208.2023.18](#)

SIGNAL MARKER BUOY, W/ SLING POUCH, YELLOW

GENERAL ACCESSORIES

PART NO.	ITEM
210.8038	2" PLASTIC SLIDER
210.8010	3 BAR SLIDER SST 2"
210.8009	3 BAR SLIDE SERRATED 5 cm
210.8023	5 cm D-RING STAINLESS
210.8024	5 cm D-RING BENT STAINLESS
210.8025	5 cm D-RING STAINLESS, LOW PROFILE
210.8008.035	QUICKLINK 2.0
210.8002.030	3" SWIVEL BOLT SNAP SST
210.8002.035	3.5" SWIVEL BOLT SNAP SST
210.8002.045	4.5" SWIVEL BOLT SNAP SST
210.8003.035	3.5" DOUBLE ENDED SNAP SST

PART NO.	ITEM
210.8031	BOOK SCREWS
220.8122	UNDERWATER NOTEBOOK
220.8122-1	UNDERWATER NOTEBOOK NOTES - REFILL
220.8123	3 PCS WRIST SLATE
220.8131	TRIBOLUBE 71, O2 COMPATIBLE LUBE - 2OZ / 57 G SYRINGE

2025 PACKAGE PROMOS

MASK AND FIN PACKAGE PROGRAM

NORTH AMERICA ONLY

Purchase twelve sets and receive the package pricing:

Part No.	Item
MASKS (PURCHASE 12)	
205.4500.07	M1
205.4700.07/10	M3 Black or White
205.4800.07	M4
FINS (PURCHASE 12)	
214.2100.00X	F1 LT
214.2200.00X	F1
214.2300.00X	F2



PROMO CODE: MFPPROMO



SMS PACKAGE

Part No.	Item	Qty
240.3573	DCX 1st Stage DIN	2
240.2000.LX	200LX 2nd Stage	2
204.2382.032.M	Hose, LP 32" Miflex	1
204.2382.084	Hose, LP 84"	1
204.2310	Press Gauge Metal No Boot	2
204.2380.006	Hose, HP 6"	2
208.13XX.00X	SMS 75 or SMS KATANA 2	1
240.4152	Regulator Necklace	1

PROMO CODE: SMSPROMO

Upgrade to Katana 2 Dual for an additional fee.
See price list for details.



SMS REGULATOR PACKAGE*

Part No.	Item	Qty
240.3573	DCX 1st Stage DIN	2
240.2000.LX	200LX 2nd Stage*	2
204.2382.032.M	Hose, LP 32" Miflex	1
204.2382.084	Hose, LP 84"	1
204.2310	Press Gauge Metal No Boot	2
204.2380.006	Hose, HP 6"	2
240.4152	Regulator Necklace	1

PROMO CODE: SMSREGPROMO



*No product substitutions. No additional discounts. Two package order/ shipment minimum. Description and image must be included with any advertisement. Available in Canada, the USA, and the Caribbean only. May not be combined with any other offer.

WHILE SUPPLIES LAST

The following items are not part of the 2025 product assortment and are only available while supplies last. Please refer to your 2024 buyer's guide for more product details and imagery.

PART NUMBER	DESCRIPTION
220.8120	TRAUMA SHEARS W/SHEATH
220.9110	INFLATOR MULTI-TOOL
204.2382.060	LP HOSE, 60"/152CM
208.1160.002	ENVIRO-PRO BC, SM
208.1160.006	ENVIRO-PRO BC, XL
208.1202.007	HTS 2,W/OPKTS,XXL
208.1202.002	HTS 2,W/OPKTS,SM
208.1202.003	HTS 2,W/OPKTS, MD
208.1202.006	HTS 2,W/OPKTS,XL
208.1253.038	S38 LX WING W/SLOTS
208.1302.007	SMS100 COMPLETE - XXL - DUAL PKG
208.1302.003	SMS100 COMPLETE - SM/MD - DUAL PKG
208.1311	SMS75 SINGLE WING - ONLY
240.4800.06	MOD-1, SCUBA POD ONLY
208.1060.013	INFLATOR SYSTEM w/ELBOW 13"
208.1060.016	INFLATOR SYSTEM W/ ELBOW 16" /41CM
208.1060.019	INFLATOR SYSTEM W/ ELBOW 19" /48CM
205.5015.RT	OPTICAL LENS M3 -1-5 - RT
205.5035.RT	OPTICAL LENS M3 -3.5 - RT
205.5040.LT	OPTICAL LENS M3 -4-0 - LT
205.5040.RT	OPTICAL LENS M3 -4-0 - RT
205.5045.LT	OPTICAL LENS M3 -4.5 - LT
205.5045.RT	OPTICAL LENS M3 -4-5 - RT
205.5050.RT	OPTICAL LENS M3 -5-0 - RT
205.5055.RT	OPTICAL LENS M3 -5.5 - RT
205.5060.RT	OPTICAL LENS M3 -6.0 - RT
205.5070.RT	OPTICAL LENS M3 -7.0 - RT
205.5070.LT	OPTICAL LENS M3 -7.0 - LT
205.5075.RT	OPTICAL LENS M3 -7.5 - RT
277.0055.008	AUG 260 BOTTOM - XXXL (UNISEX)
277.0055.002	AUG 260 BOTTOM - SM (UNISEX)
277.0055.006	AUG 260 BOTTOM - XL (UNISEX)
277.0054.002	AUG 260 TOP - SM (UNISEX)
277.0054.005	AUG 260 TOP - LG (UNISEX)

WHILE SUPPLIES LAST

The following items are not part of the 2025 product assortment and are only available while supplies last. Please refer to your 2024 buyer's guide for more product details and imagery.

PART NUMBER	DESCRIPTION
277.0054.008	AUG 260 TOP - XXXL (UNISEX)
277.0057.006	AUG 450 (BOTTOM) - MENS XL
277.0057.016	AUG 450 (BOTTOM) - LADIES 14/ML
277.0057.015	AUG 450 (BOTTOM) - LADIES 12/MD
277.0057.017	AUG 450 (BOTTOM) - LADIES 16/LG
277.0057.014	AUG 450 (BOTTOM) - LADIES 10/SM
277.0057.002	AUG 450 (BOTTOM) - MENS SM
277.0057.018	AUG 450 (BOTTOM) - LADIES 18/2XL
277.0057.013	AUG 450 (BOTTOM) - LADIES 8/XS
277.0057.011	AUG 450 (BOTTOM) - LADIES 4/3XS
277.0057.012	AUG 450 (BOTTOM) - LADIES 6/2XS
277.0056.014	AUG 450 (TOP) - LADIES 10/SM
277.0056.018	AUG 450 (TOP) - LADIES 18/2XL
277.0056.003	AUG 450 (TOP) - MENS MD
277.0056.011	AUG 450 (TOP) - LADIES 4/3XS
277.0056.012	AUG 450 (TOP) - LADIES 6/2XS
277.0056.016	AUG 450 (TOP) - LADIES 14/ML
277.0056.002	AUG 450 (TOP) - MENS SM
277.0056.015	AUG 450 (TOP) - LADIES 12/MD
277.0056.017	AUG 450 (TOP) - LADIES 16/LG
277.0056.013	AUG 450 (TOP) - LADIES 8/XS
277.0051.016	AUG BASE BOTTOM - LADIES 14/ML
277.0051.018	AUG BASE BOTTOM - LADIES 18/2XL
277.0051.017	AUG BASE BOTTOM - LADIES 16/LG
277.0051.013	AUG BASE BOTTOM - LADIES 8/XS
277.0051.014	AUG BASE BOTTOM - LADIES 10/SM
277.0051.008	AUG BASE BOTTOM - MENS XXXL
277.0051.003	AUG BASE BOTTOM - MENS MD
277.0051.015	AUG BASE BOTTOM - LADIES 12/MD
277.0051.011	AUG BASE BOTTOM - LADIES 4/3XS
277.0051.012	AUG BASE BOTTOM - LADIES 6/2XS
277.0051.002	AUG BASE BOTTOM - MENS SM
277.0050.017	AUG BASE TOP - LADIES 16/LG

WHILE SUPPLIES LAST

The following items are not part of the 2025 product assortment and are only available while supplies last. Please refer to your 2024 buyer's guide for more product details and imagery.

PART NUMBER	DESCRIPTION
277.0050.003	AUG BASE TOP - MENS MD
277.0050.002	AUG BASE TOP - MENS SM
277.0050.013	AUG BASE TOP - LADIES 8/XS
277.0050.008	AUG BASE TOP - MENS XXXL
277.0050.012	AUG BASE TOP - LADIES 6/2XS
277.0050.014	AUG BASE TOP - LADIES 10/SM
277.0050.015	AUG BASE TOP - LADIES 12/MD
277.0050.016	AUG BASE TOP - LADIES 14/ML
277.0050.018	AUG BASE TOP - LADIES 18/2XL
277.0050.011	AUG BASE TOP - LADIES 4/3XS
910101RED-40L	BTR500 - L DRYsuit
206.3080.M	LED6 PRIMARY TORCH, MAGNETIC SWITCH
206.1217	LED1200 LIGHT CABLE 60"
206.1204	ALUMINUM GOODMAN HANDLE, LED1200
206.1200.1	LED1200 CHARGER ASSEMBLY
217.6506.03	BAG, DRY, PVC-TARPAULIN - 9"WX21.25"H - BLACK
217.6506.05	BAG, DRYsuit, 2 ZIP, HOL, GRAY
220.9007	HTS 2 BUTTPLATE (BACKPLATE COMPATIBLE)
210.8022	1" D-RING STAINLESS
215.1860.058	CANVAS OVER-BOOT SIZE 8
205.5075.LT	OPTICAL LENS M3 -7.5 - LT
208.1029	UTILITY POCKET
240.1650	SMS DECO RIGGING KIT
210.8041	WELDED D-RING 45 DEGREE CHEST
205.5020.RT	OPTICAL LENS M3 -2.0 - RT
208.1039	SMS100 RAIL KIT (1 SET)
7107	ADJUSTMENT KNOB ASSY, 212, HOL (USES 7107.A, 7105.07, 7108)
204.8489	DIVELOG, USB DIRECT CONNECT
220.8126	DOUBLE OFFSET D-RING
280.4400.003	HOODED SWEATSHIRT / MEDIUM
208.1320	SMS BUNGEE KIT
210.8020	2" ROUND RING STAINLESS
215.1600.003	DRYSUIT GAITER MD

WHILE SUPPLIES LAST

The following items are not part of the 2025 product assortment and are only available while supplies last. Please refer to your 2024 buyer's guide for more product details and imagery.

PART NUMBER	DESCRIPTION
7084.07	HOLLIS COVER RING ,212,221,321
210.8042	1" D-RING TO HOSE CLAMP
208.1025	CROTCH STRAP, 1.0-INCH WEBBING W/ SCOOTER RING
208.1027	CROTCH STRAP, 1.5-INCH WEBBING W/ SCOOTER RING
208.1264	BACK PLATE BACK PAD W/BOOKSCREWS
7048	RING, TOP COVER, SS, HOLLIS
277.2710.007	NEOTEK SEMI-DRYSUIT, UNISEX, XXL

WARRANTY

Hollis Warranty

Our commitment does not end when you buy a Hollis product. Long after the initial sale, we provide prompt and professional after-sales service and warranties to keep your gear working well and looking good.

Product Registration

Product registration is an important step toward enjoying your new Hollis Product. Registering helps us facilitate warranty service, and permit us to contact you should your product require an update or other service.

REMEMBER, NOT REGISTERING YOUR PRODUCT DOES NOT DIMINISH YOUR WARRANTY RIGHTS.

Please retain your original dated sales receipt for your records. For warranty service of your Hollis Product you will need to provide a copy of your dated sales receipt obtained from an Authorized Hollis Dealer to confirm warranty status.

When purchasing online at www.Hollis.com, your packing slip, sent with your shipment, serves as a receipt. If you purchased Hollis product through an Authorized Hollis Dealer, their receipt serves as your proof of purchase.

Product-Specific Coverage

Regulators	Materials & Construction	Limited lifetime* & Hollis for Life* (Free Parts Program) * All regulators have a 2 year / 200 dive service interval. Proof of annual inspection required to qualify for program.
Buoyancy Compensators	Materials & Construction Requires Annual Service	Five-year from date of purchase
Wings	Materials & Construction	Five-year from date of purchase
Analog Instruments	Materials & Construction Requires Annual Service	Two-year from date of purchase
Masks, Snorkels, Fins	Materials & Construction	One-year from date of purchase
Wetsuits	Materials & Construction	One-year from date of purchase
Drysuits	Materials & Construction	5-year warranty on construction. Does not cover damage caused by normal wear and tear, misuse or negligence. The warranty is limited to repair or replacement, at Hollis's option, and where permitted by law does not include consequential or incidental damages. This warranty is rendered invalid by unauthorized repairs. 1 year warranty on zippers and valves
Bags	Materials & Construction	One-year from date of purchase

WARRANTY

"Hollis for Life" Program

The Hollis for Life Program offers FREE annual maintenance parts for as long as you own your Hollis regulator and maintain the terms specified below. This program applies to all Hollis Regulators purchased and serviced through an Authorized Dealer. Register your product and you are automatically enrolled in the program. There is no additional charge for this program.

This program allows for parts to be provided at no charge for as long as the owner maintains the terms specified below. Individual dealer participation in this program is voluntary. A dealer is only obligated to honor service agreements that they have issued. Any Authorized Hollis Dealer may, at their option, honor a service agreement issued by another dealer.

All products must be inspected and/or serviced by an authorized Hollis Service Technician.

All labor fees incurred in overhaul service are the responsibility of the owner of the product serviced. This includes, but is not limited to inspection, overhaul or other services performed.

To maintain the program, you must show proof of authorized service within the specified warranty period (outlined below). This agreement is null and void if service is not performed within the specified warranty period.

This Hollis for Life program is non-transferable and valid for the life of the original owner.

This agreement, and Hollis' liability, is limited to the replacement parts. Hollis makes and customer receives no other warranties or conditions on parts provided by Hollis, express, implied, statutory, or in any communication with customer, and Hollis specifically disclaims any implied warranty of merchantability of fitness for a particular purpose. In no event will Hollis be liable for lost profits, punitive, exemplary, incidental, consequential or special damages. In any event, Hollis' liability shall not exceed the purchase price of the original equipment.

The Hollis for Life program does not apply to, and Hollis will have no obligation to replace, parts with defects or damage caused by misuse, accident, external causes, or installation error.

Warranty Details

*LIMITED LIFETIME REGULATOR WARRANTY

Hollis guarantees, to the original purchaser only, that the metal valve and metal components used in Hollis regulators are free of defects in material and/or workmanship under normal recreational scuba use for the lifetime of the regulator, provided proper care and maintenance have been performed as prescribed by the owner's guide or instruction card included with the equipment, and that the regulator is:

- Purchased from an Authorized Hollis Dealer.
- Inspected or serviced annually by an Authorized Hollis Dealer as outlined in the LIFETIME PARTS REPLACEMENT SERVICE AGREEMENT. ONLY products purchased from Authorized Hollis Dealers are eligible for ANY warranty or service program coverage. Products not purchased from an authorized source MAY NOT be authentic, be complete, have all design and production updates, meet Hollis' performance and quality standards, and may have been tampered with.

Hollis guarantees, to the original purchaser only, that the equipment purchased is free of defects in material and/or workmanship under normal recreational scuba use, provided proper care and maintenance have been performed as prescribed by the owner's guide or instruction card included with the equipment for the period outlined below. Should this product prove to be defective for any reason (other than those listed as limitations below) the product will be serviced or replaced at Hollis' sole discretion at no charge (excluding shipping and handling).

This warranty shall be void if the equipment has been tampered with by a person (or persons) not authorized by Hollis to perform service, or if the equipment is used for rental, military or commercial purposes.

For more information about the Hollis warranty, please visit www.Hollis.com/support/warranty

BCD SIZE CHARTS

ST ELITE SYSTEM, ELITE 2 HARNESS

SIZE	HEIGHT		WEIGHT		CHEST		WAIST	
	IN	CM	LBS	KG	IN	CM	IN	CM
XS/SM	5'0" - 5'7"	152 - 170	100 - 155	45 - 70	28" - 40"	71 - 102	26" - 38"	66 - 97
MD/LG	5'7" - 6'2"	170 - 188	150 - 210	68 - 95	34" - 48"	86 - 122	32" - 42"	81 - 107
XL/XXL	6'2" - 6'5"	188 - 260	210 - 300	95 - 136	40" - 50"	102 - 127	38" - 48"	97 - 122

HD-200, LTS, HTS 2

SIZE	HEIGHT		WEIGHT		CHEST		WAIST	
	IN	CM	LBS	KG	IN	CM	IN	CM
SM	5'2" - 5'7"	157 - 170	120 - 155	54 - 70	30" - 40"	76 - 102	30" - 38"	76 - 97
MD	5'7" - 5'11"	170 - 180	150 - 185	68 - 84	34" - 44"	86 - 112	32" - 40"	81 - 102
LG	5'11" - 6'2"	180 - 188	180 - 210	82 - 95	38" - 48"	97 - 122	34" - 42"	86 - 107
XL	6'2" - 6'5"	188 - 195	195 - 240	88 - 109	40" - 50"	102 - 127	38" - 46"	97 - 117
XXL	6'5" - 6'8"	195 - 203	230 - 260	102 - 115	45" - 55"	112 - 135	40" - 48"	104 - 125

SMS75

SIZE	HEIGHT		WEIGHT		CHEST		WAIST	
	IN	CM	LBS	KG	IN	CM	IN	CM
SM	5'5" - 6'	165 - 183	120 - 170	55 - 77	30" - 42"	76 - 107	28" - 38"	71 - 97
MD	5'7" - 6'2"	170 - 188	150 - 200	68 - 91	36" - 48"	91 - 122	32" - 42"	81 - 107
LG	6' - 6'5"	183 - 196	190 - 260	86 - 118	44" - 58"	122 - 147	36" - 46"	91 - 117

EXPOSURE SIZING CHARTS

DX-300X UNISEX SIZING

SIZE	WEIGHT		HEIGHT		CHEST		WAIST		HIP		INSEAM	
	LBS	KG	IN	CM	IN	CM	IN	CM	IN	CM	IN	CM
XS	120 – 145	54 – 66	63 – 66	160 – 168	32 – 36	81 – 91	26 – 30	66 – 76	32 – 36	81 – 91	26 – 28	66 – 71
SM	135 – 155	61 – 70	66 – 68	168 – 173	34 – 38	86 – 96	28 – 32	71 – 81	34 – 38	86 – 96	27 – 29	68 – 73
MD	150 – 175	68 – 80	67 – 70	170 – 178	37 – 40	94 – 101	30 – 34	76 – 86	35 – 39	89 – 99	28 – 30	71 – 76
ML	170 – 195	77 – 89	69 – 72	175 – 183	38 – 42	96 – 106	32 – 36	81 – 91	37 – 41	94 – 104	29 – 31	73 – 79
LG	185 – 210	84 – 96	70 – 73	178 – 185	40 – 44	101 – 112	34 – 38	86 – 96	39 – 43	99 – 109	30 – 32	76 – 81
XL	210 – 240	96 – 109	71 – 74	180 – 188	42 – 46	106 – 117	36 – 40	91 – 101	41 – 45	104 – 114	31 – 33	79 – 84
XXL	235 – 265	107 – 121	73 – 76	185 – 193	44 – 48	112 – 122	38 – 42	96 – 106	43 – 47	109 – 119	32 – 34	81 – 86
XXXL	260 – 295	117 – 134	74 – 78	188 – 198	46 – 50	117 – 127	40 – 44	101 – 112	45 – 49	114 – 124	33 – 35	84 – 89

NEOTEK 8/7/6 SEMI DRY AND NEOTEK 4/3 WETSUIT UNISEX SIZING

SIZE	WEIGHT		HEIGHT		CHEST		WAIST		HIP	
	LBS	KG	IN	CM	IN	CM	IN	CM	IN	CM
SM	135 – 150	61 – 68	5'6" – 5'8"	167 – 172	36 – 38	91 – 96	29 – 31	73 – 78	35 – 36	88 – 91
MD	155 – 170	70 – 77	5'8" – 5'10"	172 – 177	38 – 40	96 – 101	31 – 33	78 – 83	37 – 39	93 – 99
ML	165 – 180	74 – 81	5'9" – 5'11"	175 – 180	40 – 41	101 – 104	32 – 34	81 – 86	38 – 40	96 – 101
LG/SH	170 – 185	74 – 81	5'7" – 5'9"	170 – 175	41 – 42	104 – 106	33 – 35	83 – 88	39 – 41	99 – 104
LG	175 – 190	79 – 86	5'10" – 6'1"	177 – 182	41 – 42	104 – 106	33 – 35	83 – 88	39 – 41	99 – 104
XL/SH	185 – 200	81 – 88	5'8" – 5'10"	172 – 177	42 – 44	106 – 111	35 – 37	88 – 93	41 – 43	104 – 109
XL	190 – 205	86 – 92	5'11" – 6'3"	180 – 190	42 – 44	106 – 111	35 – 37	88 – 93	41 – 43	104 – 109
XXL	205 – 220	92 – 99	6'0" – 6'3"	182 – 190	44 – 46	111 – 116	37 – 39	93 – 99	44 – 46	111 – 116
XXXL	230 – 260	104 – 117	6'1" – 6'4"	185 – 193	47 – 50	119 – 127	40 – 43	101 – 109	47 – 50	119 – 127

FIN SIZE CHARTS

FIN SIZING

	SMALL	REGULAR	XL	XXL
F1	-	US 7-9 EU 40-42 JP 25-27 UK 6.5-8.5	US 10-12 EU 43-45 JP 28-30 UK 9.5-11.5	US 13-15 EU 46-48 JP 31-33 UK 12.5-14.5
F1 LT	-	US 7-9 EU 40-42 JP 25-27 UK 6.5-8.5	US 10-12 EU 43-45 JP 28-30 UK 9.5-11.5	US 13-15 EU 46-48 JP 31-33 UK 12.5-14.5
F2	US 4-6 EU 37-39 JP 22-24 UK 3.5-5.5	US 7-9 EU 40-42 JP 25-27 UK 6.5-8.5	US 10-12 EU 43-45 JP 28-30 UK 9.5-11.5	-

The Hollis logo is centered in the image. It features a red icon on the left, which consists of two curved lines forming a shape similar to a stylized 'H' or a pair of fins, with a small white oval in the center. To the right of the icon, the word "hollis" is written in a red, lowercase, sans-serif font. A registered trademark symbol (®) is located at the end of the word.

hollis®